



At a glance

Mannesmann Precision Tubes



MANNESMANN
PRECISION TUBES

A Member of the Salzgitter Group

The group of companies



Mannesmann Precision Tubes is a leading manufacturer of cold-drawn seamless and welded precision steel tubes, seamless hot-rolled tubes and tubular components.

As an internationally active supplier to the automotive industry, the manufacturing industry and the energy sector, we produce tubular products that meet the highest quality standards.

Salzgitter Group

Business Unit Steel Processing

Mannesmann Precision Tubes

Mannesmann Precision Tubes GmbH, Mülheim		Mannesmann Precision Tubes France SAS, Saint-Florentin
Hamm	Brackwede	Saint-Florentin
Wickede	Holzhausen	Vitry-le-François



Germany

Sales: Mülheim an der Ruhr, Administration: Hamm
Production: Bielefeld-Brackwede,
Burbach-Holzhausen, Hamm, Wickede, Zeithain



France

Production and Sales: Saint-Florentin,
Vitry-le-François



Netherlands

Production and Sales: Helmond



Mexico

Production and Sales: Guadalajara

Our locations in Germany, France, the Netherlands and Mexico form the basis for high delivery performance and customer satisfaction – for customers around the world.

Synergy effects as a result of our integration with the Salzgitter Group ensure an outstanding efficiency – from the pre-material to the finished precision steel tube and sometimes beyond that.

Mannesmann Precision
Tubes Netherlands B.V.,
Helmond

Helmond

Mannesmann Precision
Tubes Mexico S.A. de C.V.,
Guadalajara

Guadalajara

Mannesmannröhren-Werk
GmbH, Zeithain

Zeithain

Supply programm

Steel tubes from Mannesmann Precision Tubes

Seamless and cold-drawn precision steel tubes with special dimensional accuracy according to EN 10305-1, EN 10305-4

External diameter:	1.5 – 178 mm	0.059 – 7.008“
Wall thicknesses:	0.2 – 17.5 mm	0.008 – 0.689“

Welded and cold-drawn precision steel tubes with special dimensional accuracy according to EN 10305-2

External diameter:	16 – 120 mm	0.630 – 4.724“
Wall thicknesses:	0.8 – 7.5 mm	0.031 – 0.295“

Welded and size-rolled precision steel tubes according to EN 10305-3

External diameter:	25 – 114,3 mm	0.984 – 4.500“
Wall thicknesses:	1.75 – 8.5 mm	0.069 – 0.334“

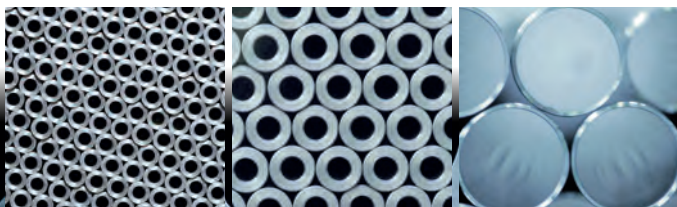
Hot-rolled seamless steel tubes – hollows

External diameter:	17.2 – 133 mm	0.677 – 5.236“
Wall thicknesses:	2 – 20 mm	0.079 – 0.787“
Length:	up to 22 m	up to 72.2‘

Hot-rolled seamless steel tubes – finished tubes

External diameter:	17.2 – 133 mm	0.677 – 5.236“
Wall thicknesses:	2 – 20 mm	0.079 – 0.787“
Length:	up to 22 m	up to 72.2‘

Other dimensions on request



Standards and certifications

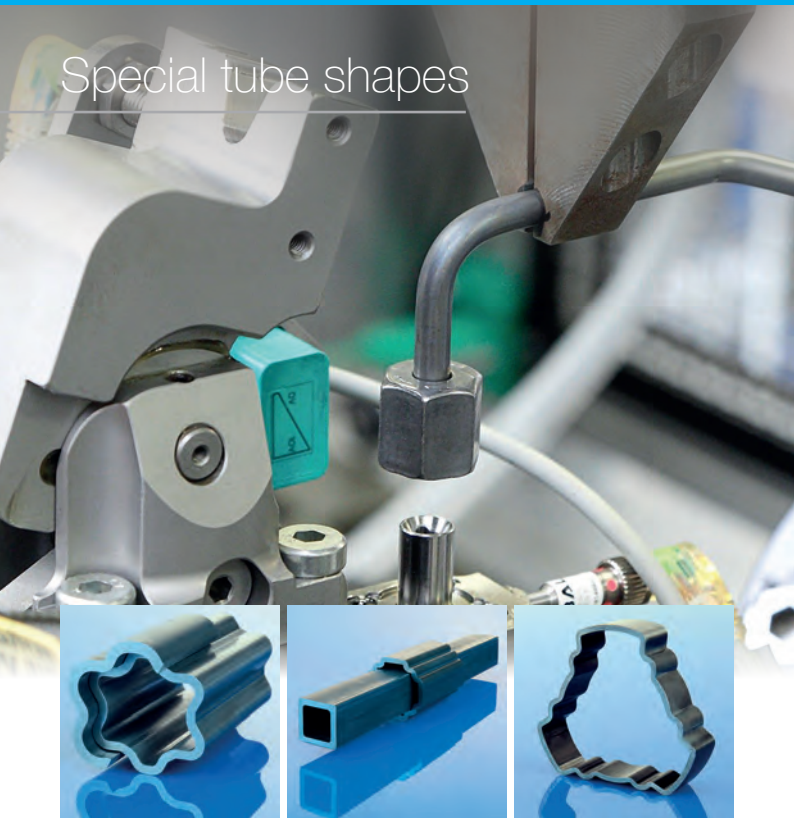
The production of precision steel tubes is in accordance with international standards e.g.: EN 10305-1, EN 10305-2, EN 10305-3, EN 10305-4, EN 10216 as well as EN 10217, ASTM A 179, A 192, A 209, A 210, A 213, A 556, Japan Industrial Standard and British Standards. Other standards upon request.

By certifying all production sites to IATF 16949 in addition to ISO 9001, we can also demonstrate compliance with the stringent requirements of the automotive industry expected of partners.

These and other certifications and approvals for our locations are provided in the download section of our website:



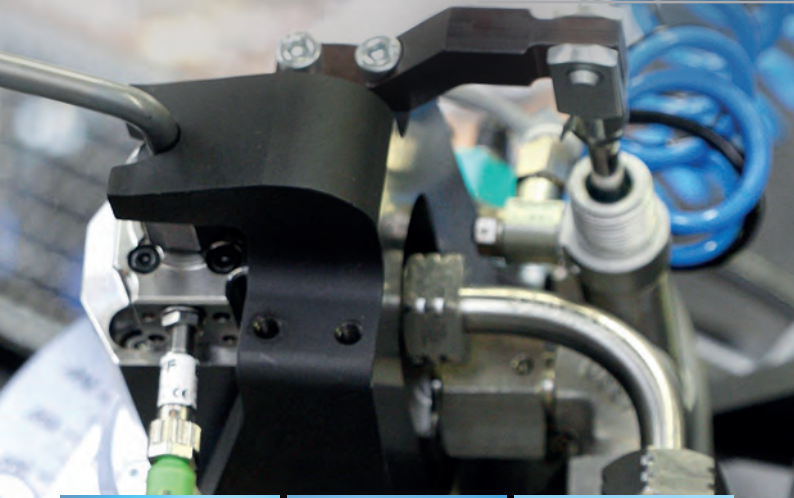
Special tube shapes



Special tube shapes from Mannesmann Precision Tubes

We find customized solutions to your ideas for special tube shapes. In addition to classic geometric shapes (square, rectangular, round, oval and star-shaped), a huge variety of combinations and other shapes can be manufactured to customer drawings.

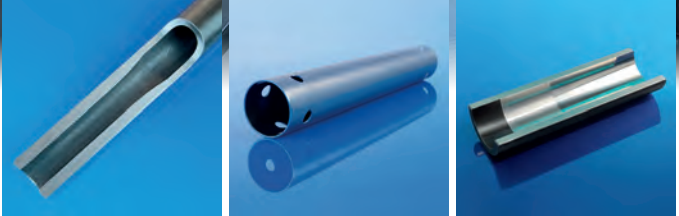
Special tube shapes are available in a wide range of materials, from low-alloy carbon steels to high-chromium heat-resistant steels. Tight cross-sectional tolerances and excellent surface properties are ensured by comprehensive, specially adapted non-destructive testing methods.



Components from Mannesmann Precision Tubes

Based on the targeted interlinking of our know-how in precision steel tube production with the requirements on high-tech tube components, we design, develop and manufacture ready-to-fit components for you.

We create the optimum manufacturing process tailored to your needs. In this, we can also process our precision steel tubes on fully interlinked lines with extensive in-line measurements. If required, we can also offer you an appropriate surface coating.



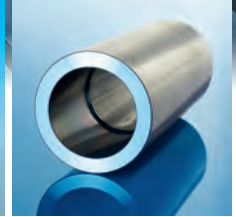
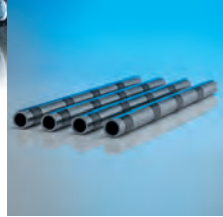
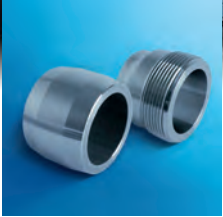
Depending on the intended application, we advise you on the selection of the right tube production route, suitable heat treatment, and the necessary processing steps – which includes useful surface protection strategies.

If required, our team accompanies the entire process of further tube processing – from the idea to the development and production of pre-series parts and prototypes to the product ready for series production.

Product development

Beyond day-to-day support, we develop innovative solutions in the fields of products, testing and validation in close cooperation with our customers and Salzgitter Mannesmann Forschung, the Group's own research institute.

Tube processing



We have acquired our expertise over many years and therefore are able to offer a wide range of possible further processing steps for steel tubes. We actively support you with your plans – from sawing and machining of the tube blank to complex bending and upsetting operations.

Examples of possible processing steps:

- Variable wall thicknesses/Tailored Drawn Tubes (TDT)
- Drilling/stamping/lasering
- Peeling/roller burnishing
- Cold forming
- Cutting
- Beveling
- Deburring
- Thread rolling/threading
- Partial hardening
- Turning/milling/grinding

Application areas



As a leading supplier of precision steel tubes for automobile manufacturing, Mannesmann develops products that contribute to optimized vehicle handling, comfort and safety. Regular internal and external audits ensure high quality.

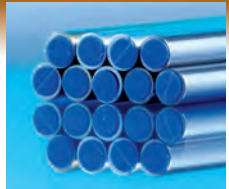
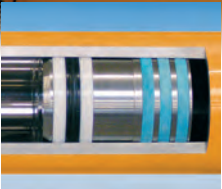
Automotive applications of our tubular products:

- Vehicle Safety
 - Airbag Inflators
 - Seatbelt Pretensioners
- Engine and Gearbox
 - Diesel Injection Lines
 - Camshafts
 - Gear Shafts



- Driveline
 - Propshafts
 - Sideshafts
 - Constant-Velocity Joints (Ball Cages)
- Alternative Drives
 - Rotor Shafts
 - Sideshafts for alternative drives
 - Hydrogen high pressure tanks
 - Hydrogen high pressure lines
- Vehicle Chassis
 - Shock Absorbers
 - Stabilizers
 - Steering Columns
 - Axles
 - Anti-Vibration Systems

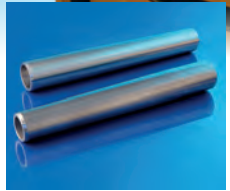
Application areas



Mannesmann has many years of experience as a supplier for hydraulic and pneumatic applications as well as mechanical engineering.

Industry applications of our tubular products:

- Hydraulic Machinery
 - Hydraulic Cylinders
 - HPZ tubes
 - HP tubes
 - HPS tubes
 - HPK tubes
 - Hydraulic Lines
 - HPL tubes



- Mechanical Engineering

- In the manufacture of machinery and plant facilities, our steel tubes are suitable for a whole range of applications. We supply products with optimized property profiles, which are tailored perfectly to the customer's requirements from a wide range of dimensions, materials and shapes.

- Tubes for machining

Cylindrical hollow parts for turning can be made from solid round steel or tubes – also available with customized pre-shaped geometries. Cost-effectiveness is further increased by small eccentricity and close external and internal dimensional tolerances.

Application areas



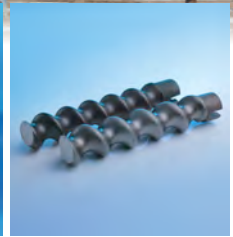
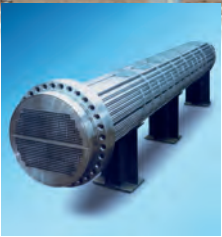
Our products can also be found in numerous applications of the energy industry and as drill rods for exploration.

Energy applications of our tubular products:

- Mineral and geotechnical exploration
 - Drill Rods
 - Injection Anchors



Photo: 295152436 ©barmalini, Fuentes de Andalucía, www.stock.adobe.com



- Heat Transfer and Renewables
 - Heat Exchangers
 - Steam Generators
 - Feedwater Heaters
- Oil and Gas
 - Green Tubes
 - Progressive-Cavity Pumps (Stators)

Mannesmann Precision Tubes GmbH
Wiesenstrasse 36
45473 Mülheim an der Ruhr, Germany
www.mannesmann-precision-tubes.com

Sales Automotive

Mannesmann Precision Tubes GmbH
Wiesenstrasse 36
45473 Mülheim an der Ruhr, Germany
Phone: +49 208 458-1203
Email: automotive.mpt@mannesmann.com

Mannesmann Precision Tubes France SAS
ZI La Saunière
89600 Saint-Florentin, France
Phone: +33 3 86 43 50 66
Email: automotive.mptfr@mannesmann.com

Mannesmann Precision Tubes Mexico S.A. de C.V.
Calle A No. 239, Parque Industrial El Salto
El Salto, Jalisco, C.P. 45680, Mexico
Phone: +52 01 33 3688 1107 ext.110
Email: automotive.mptmx@mannesmann.com

Sales Industry and Energy

Mannesmann Precision Tubes GmbH
Wiesenstrasse 36
45473 Mülheim an der Ruhr, Deutschland
Phone: +49 208 458-1161
Email: industry.mpt@mannesmann.com

Mannesmann Precision Tubes France SAS
ZI La Saunière
89600 Saint-Florentin, France
Phone: +33 6 08 10 06 99
Email: industry.mpt@mannesmann.com

Mannesmann Precision Tubes Netherlands B.V.
Engelseweg 173
5705 AD Helmond, Netherlands
Phone: +31 492 596-596
Email: industry.mpt@mannesmann.com

Mannesmann Precision Tubes Mexico S.A. de C.V.
Calle A No. 239, Parque Industrial El Salto
El Salto, Jalisco, C.P. 45680, Mexico
Phone: +52 01 33 3688 1107 ext.110
Email: industry.mptmx@mannesmann.com



MANNESMANN. Das Rohr.